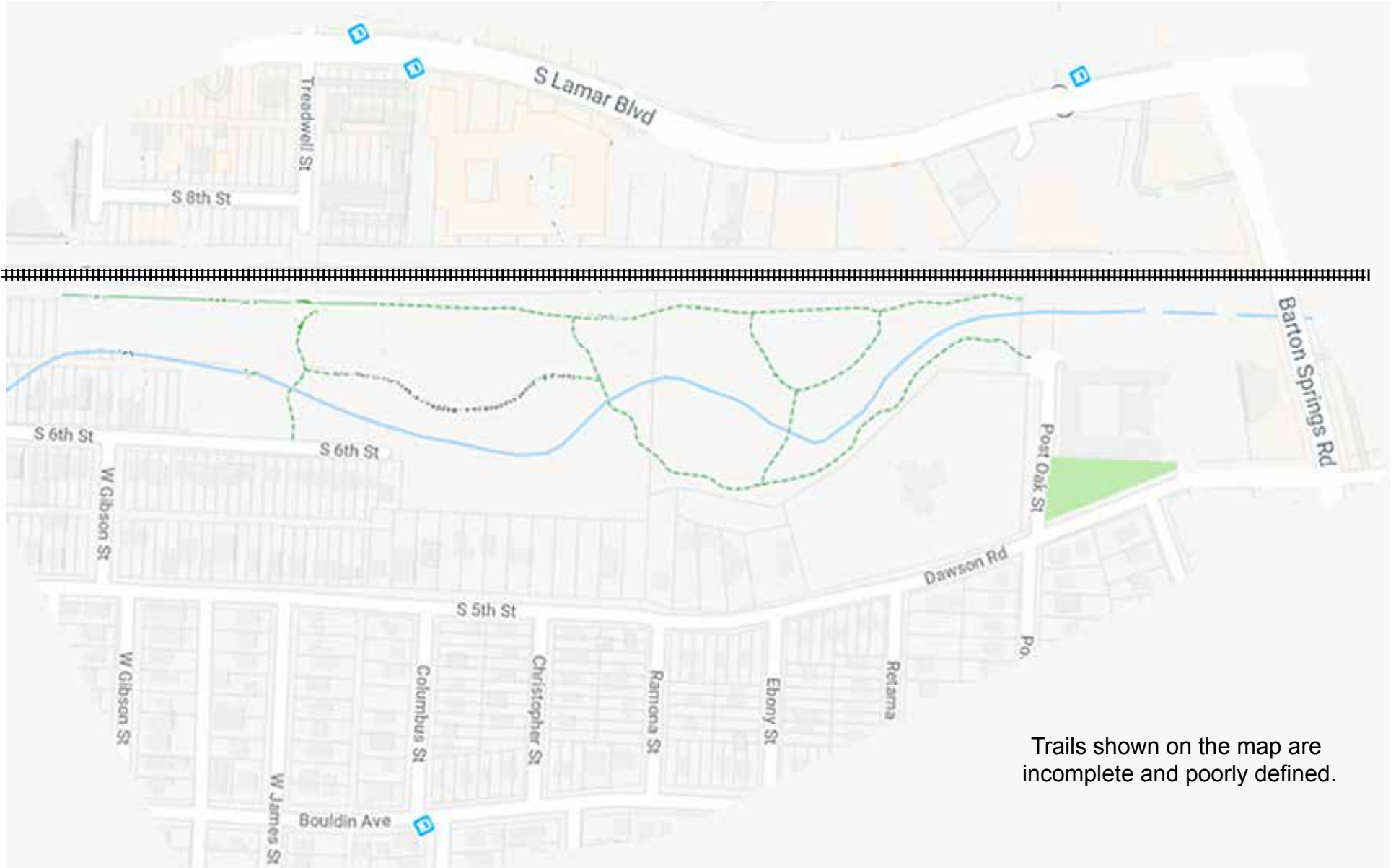


West Bouldin Creek Greenbelt

As seen from a recent snippet from Google Maps



Trails shown on the map are incomplete and poorly defined.

West Bouldin Creek Greenbelt - Master Trail Sign Plan

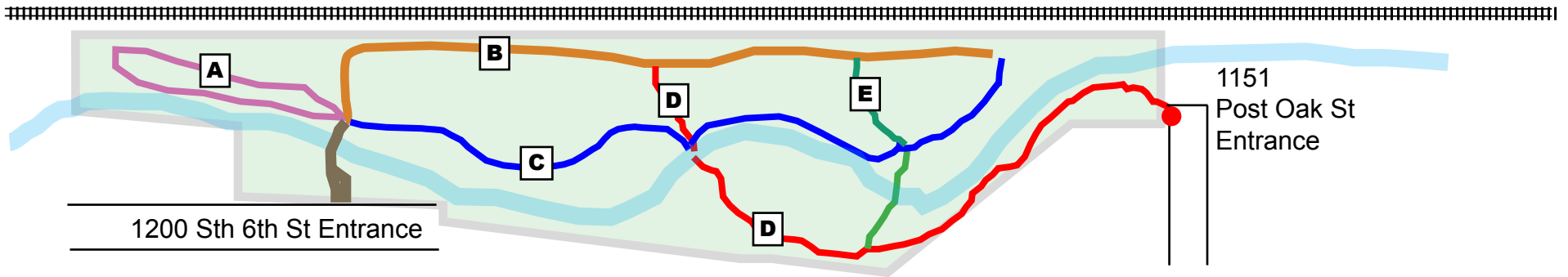
Why the need for a master sign plan developed and approved by BCNA?

- A. Fulfills the goals outlined in the 2009 West Bouldin Creek Greenbelt Restoration Plan to develop and provide educational and recreational didactics along the trails
- B. Clarifies omissions and errors in current maps
- C. Provides a working reference document for use by BCNA parks committee members, City staff, volunteers and others
- D. Defines, names and limits the trails BCNA has agreed to maintain
- E. Identifies official and authorized trails in the greenbelt
- F. Establishes BCNA as a major stakeholder with future developments in the 18 acre greenbelt

What is in this Master Trail Sign Plan ?

West Bouldin Creek Greenbelt - Master Trail Sign Plan

Proposed Trails Maintained by BCNA & Trail Names

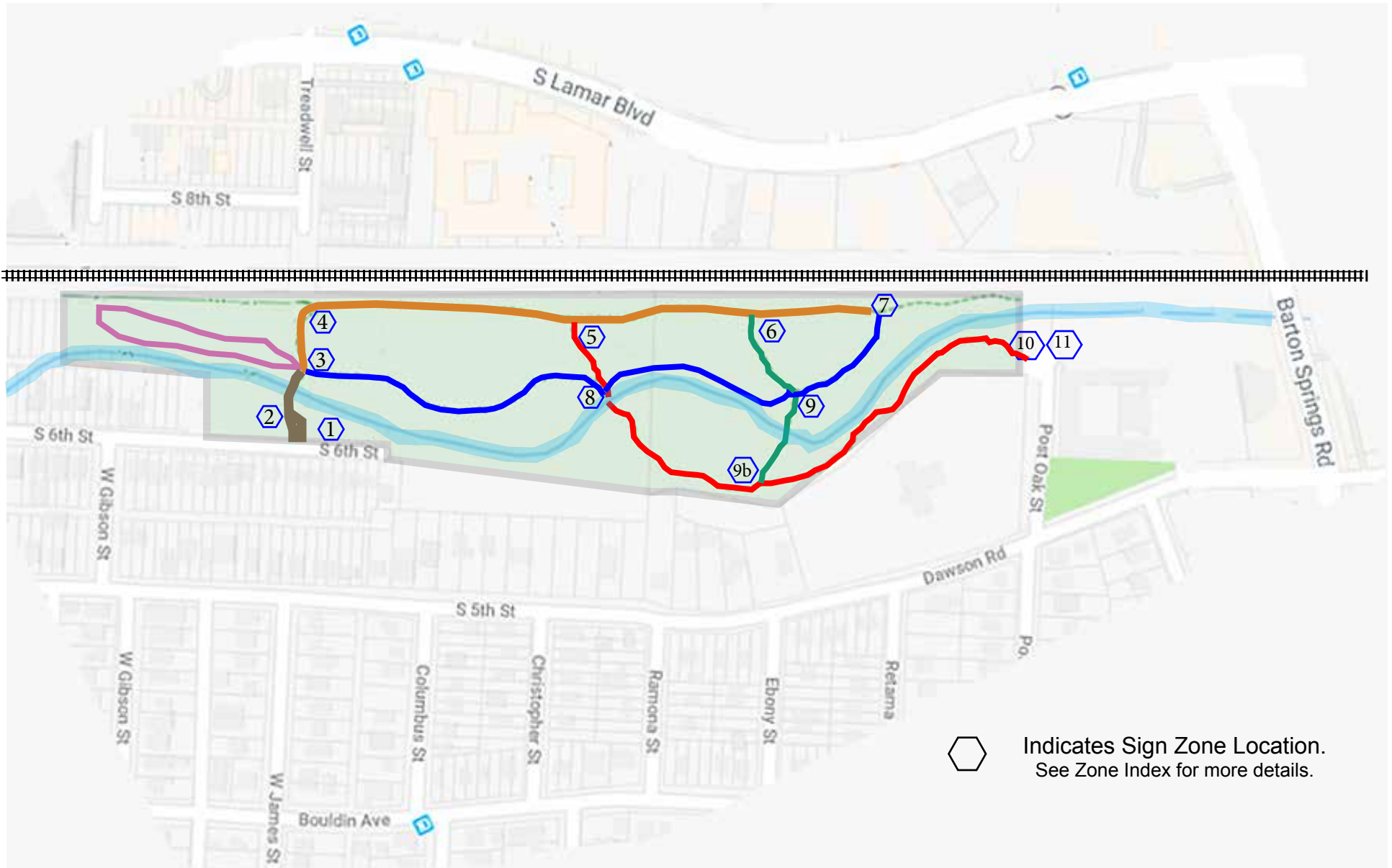


- A** Red Fox trail, color pink +
- B** Upland trail, color orange +
- C** Creek Bank trail, color navy +
- D** Post Oak trail, color red +
- E** Old Growth trail, color green +

West Bouldin Creek Greenbelt - Master Trail Sign Plan

For Trails Maintained by the Bouldin Creek Neighborhood Association

In Conjunction with the City of Austin, Parks and Recreation Department



West Bouldin Creek Greenbelt - Master Trail Sign Plan

Zone 1 Inventory and Recommendations



Zone 1. Street view at 1200 Sth 6th St. service vehicle entrance.



Zone 1. View of existing signage at service entrance w/ metal access gate, bollard and guardrail.

Zone 1 Signs currently consist of:

- A. 1ea. official PARD Greenbelt sign (3' x 5') on metal posts with address: 1200 South 6th Street c.1999
- B. 1ea. Keep Austin Beautiful (KAB) "Welcome" sign (3' x 5') with outdated work schedule c.2013
- C. 2ea. 12" x 12" Park CURFEW & NO FIRES signs on metal post adjacent to official PARD Greenbelt sign
- D. 2ea. NO DUMPING signs on metal guardrail and metal post c.1985
- E. 1ea. NO PARKING sign on metal gate c.2016

Recommend: Remove sign B. (old KAB sign) due to outdated information and poor condition
Relocate signs C. 12" x 12" NO FIRES & CURFEW to Zone 3
Clear brush & weeds around the area to improve visibility

West Bouldin Creek Greenbelt - Master Trail Sign Plan

Zone 2 Inventory and Recommendations



Zone 2. Street view of new hike/bike entrance at 1200 Sth 6th St.



Zone 2. Left, Sth 6th St. limestone block & signs, Rt. path to trails

Zone 2 The area contains the most direct path from Sth 6th St. for hikers and bikers to gain access to the new rock hop crossing at the creek bed and greenbelt trails. NOTE: Several rectangular limestone blocks, approximately 5' x 2' x 2' serve as vehicle barriers and rest stop benches.

Zone 2 Signs currently consist of:

- A. 1ea. pole sign with GREENBELT RULES, CURFEW HOURS and GROW ZONE designation.
- B. 1ea. NO PARKING sign on metal pole at curb c. 2014

RECOMMEND: Place a new 3' x 4' WELCOME SIGN near the limestone bench, on a wood frame to inform users of the features in the greenbelt including information about the "ephemeral spring" adjacent to the rock crossing feature.

OPTIONAL: In place of the WELCOME SIGN, purchase and install a 3' x 4' lockable, metal cabinet case with acrylic glass for renewable printed information display.

West Bouldin Creek Greenbelt - Master Trail Sign Plan

Zone 3 Inventory and Recommendations



Zone 3 Rock hop and limestone steps across creek bed to trails



Zone 3 Trailhead showing mock-up of greenbelt system trail map

Zone 3 The area is west of the rock hop and serves as the trailhead for the RED FOX, WESTERN LIMIT and CREEK BANK TRAILS. Note: No official signage exists at this important junction.

RECOMMEND:

- A.** Fasten a 3' x 4' official trail map graphic of the entire greenbelt trail system with a YOU ARE HERE label.
- B.** Remove from Zone 1 signs C. (2ea. 12" x 12" Park CURFEW & NO FIRES) and attach to the wooden frame as shown in the mock-up.

West Bouldin Creek Greenbelt - Master Trail Sign Plan

Zones 4 - 9B Recommendations



Example 1 of a color coded trail post w/ fastened sign placards



Example 2 of a trail post w/ fastened, color coded sign placards

Zones 4-9B In order to guide hikers/bikers along a path and to ensure that trails of convenience are not used, identification markers are required at locations 4 - 9B. Note: No official trail identification or way finding signage exists for any of the maintained trails.

RECOMMEND:

- A. Treated wooden posts approximately 36" - 48" tall, set into the ground at required locations.
- B. Pre-painting, cutting and site installation of the posts by neighborhood groups and volunteers.
- C. Top of the posts painted by hand to match the color of the trail or multiple trail colors at trail junctions.
- D. Vertical placards with text, arrows and icons out-sourced to a local printer
- E. Fasten placards on posts with security screw heads.
- E. Use one vertical square post at each zone.

West Bouldin Creek Greenbelt - Master Trail Sign Plan

Zones 10-11 Inventory and Recommendations



Zone 10. Street view 1151 Post Oak St. shows Trailhead Map mock-up.



Zone 11. View of existing signage at entrance.

Zone 10 Has no signage. It is the site for an additional system trail map with a “YOU ARE HERE” designation.

Zone 11 Signs currently consist of:

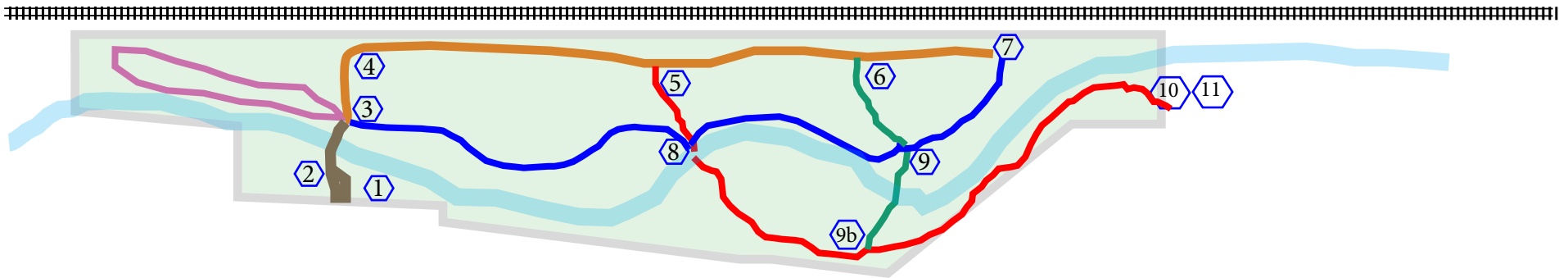
- A. 1ea. PARD sign (3' x 5') on metal posts with official address: 1151 Post Oak Street c.1999
- B. 1ea. pole sign with park rules labeled in icon form.
- C. 1ea. defunct pole sign with missing sign graphics.

Recommend:

- A. Install at Zone 10 near the trailhead entrance fence a (3' x 4') trail map graphic of the entire greenbelt trail system with a YOU ARE HERE shown,
- B. Install at Zone 11 NO PARKING signs near entrance.
- C. Remove or replace sign with missing graphics.
- D. Verify that the address on the official sign is correct.
- E. Clear brush & weeds around the area to improve visibility

West Bouldin Creek Greenbelt - Master Trail Sign Plan

Current & Proposed Sign Index Summary



Zone 1 Currently consists of official PARD sign (3' x 5') on metal posts WBCGB address: 1200 South 6th Street, Old KAB "Welcome" sign (3' x 5') with outdated work schedule, 2ea. 12" x 12" Park CURFEW & NO FIRES signs, NO DUMPING and NO PARKING shield signs on metal swing gate & metal barrier.

Recommend: Remove old KAB sign
Relocate 12" x 12" NO FIRES & CURFEW signs to zone 3
Clear brush & weeds around the area to improve visibility

Zone 2 Currently the area is now the prime pathway to the rock hop and greenbelt. Zone currently has 1ea. pole sign with park rules and curfew hours plus a 6" x 6" GROW ZONE on same pole.

Recommend: Place 3' x 4' welcome sign near the limestone bench, on a wood frame to inform pedestrian users of the size and variety of natural features in WBCGB and specifically informing them of the ephemeral spring and work done by park adopters to install the rock crossing feature.

OPTIONAL Zone would be a good location for a 3' x 4' locked sign cabinet for renewable information and announcements.

Zone 3 The area is west of the rock hop and at the junction of 4 trails leading N.S.E.W.. Currently a newly installed wood sign frame (3' x 4') sits unused.

Recommend: Attaching a (3' x 4') Trail Map graphic of the entire WBCGB showing YOU ARE HERE. Attach 12" x 12" Park CURFEW & NO FIRES from Zone 1 signs to the wooden frame.

Zone 4 Recommend installing single sided trail sign to direct persons to the Western Limit trail, color orange

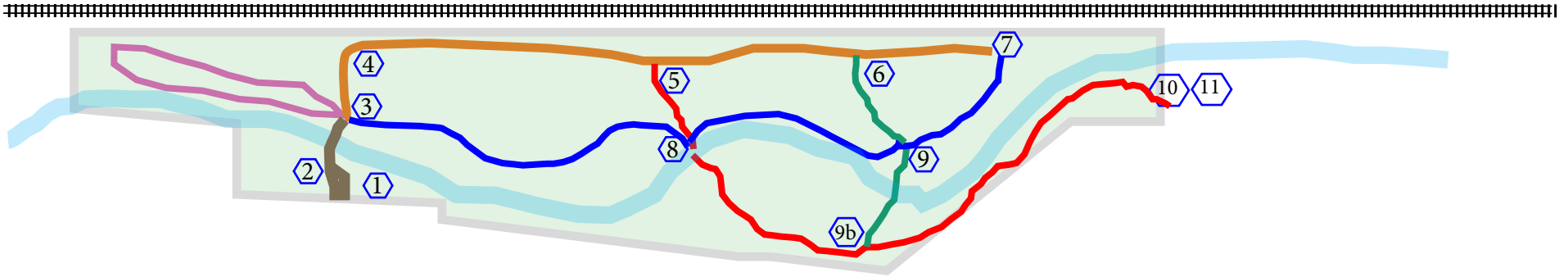
Zone 5 Recommend installing 2 sided trail sign to direct persons to the Western Limit trail, color orange and to Post Oak trail, color red.

Zone 6 Recommend installing 2 sided trail sign to direct persons to the Western Limit trail, color orange and to Old Growth trail, color green.

Zone 7 Recommend installing 2 sided trail sign to direct persons that Western Limit trail ends, color orange and to Creek Bank trail, color Navy.

West Bouldin Creek Greenbelt - Master Trail Sign Plan

Current & Proposed Sign Index Summary Continued



- Zone 8** Recommend installing 4 sided trail sign to direct persons to the Post Oak trail, color red and to Creek Bank trail, color Navy.
- Zone 9** Recommend installing 4 sided trail sign to direct persons to the Old Growth trail, color green and to Creek Bank trail, color Navy.
- Zone 9b** Recommend installing 2 sided trail sign to direct persons to the Post Oak trail, color red and to Old Growth trail, color green.
- Zone 10** Recommend installing a (3' x 4') Trail Map graphic of the entire WBCGB showing YOU ARE HERE near the entrance maze to the Post Oak Trail, color red.
- Zone 11** Currently consists of official PARD sign (3' x 5') on metal posts WBCGB address: 1151 Post Oak Street and one pole sign with park rules in icon form.
Recommend: Installing NO PARKING signs near entrance verifying the park street address is correct