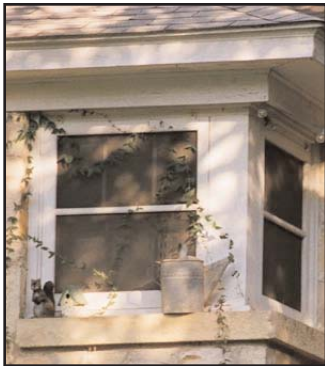


Stone Homes of Bouldin



I hope you'll enjoy some of the unique qualities that caught my eye among these mostly 30s vintage Bouldin stone cottages--including portico porches and recessed doorways, corner windows and stone ledges, the artistic combinations of stone with wood, stucco, and brick, the ornately carved and whimsical patterns of stone above doorways, the angular chimney and steep gabled roofs.



What qualities among the homes near you are worth preserving and deserving of respect and acknowledgment by new homes that go up near them?

This is sort of a continuation of an earlier article encouraging Bouldinites to participate in creating local historic districts in the 'hood. The idea of local historic districts is to preserve the historic character of specific areas --a single block face, an entire block, several blocks, or an entire neighborhood--by surveying contributing homes 50 years old or older and listing the

features and qualities that make them representative of their time and merit preservation.

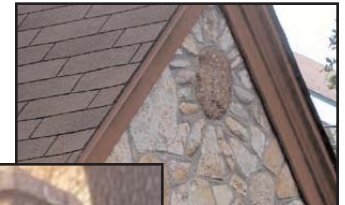


Quantifying

At least 51% of the principal buildings within a district must contribute to its historic character, and at least 60% of the district's property owners must consent to the district's establishment before City Council can adopt it.

Qualifying

Historic district nominations contain a detailed history of the district, an inventory, photograph, and history of every building in the district, and an evaluation of which buildings contribute to the historic character of the district.



Defining future from past

A district preservation plan contains design standards defined by residents and applied by the Historic Landmark Commission in reviewing new construction as well as additions to existing buildings. So while not limiting additions or improvements, the review ensures that defining features and qualities are respecting and reflected in those structural modifications and new homes.

Detailed information

You can find all the information you need about the local historic districts survey and nomination process at <http://www.heritagesocietyaustin.org/localdistricts.html> or contact City of Austin Historic Preservation Director Steve Sadowski, steve.sadowski@ci.austin.tx.us 974-2890. Thanks.--Cory, June 2007

